



CARDI MAGIC APP INSTRUCTIONS

CARDI - PROFESSIONAL ATMOSPHERE
LIGHT MANUFACTURER

CARDI TECH



WWW.CARDIAUTO.COM

CARDI SMART AMBIENT LIGHTING SYSTEM

CARDI

MAGIC

LED AMBIENT



APP DOWNLOAD AND INSTALLATION INTRODUCTION

- 1** Please search CARDI MAGIC in major Appcenters, or scan below QR code.
- 2** Use your mobile phone to scan the QR code on the main controller or on the packaging box to download the "CARDI MAGIC" APP or search for "CARDI MAGIC " in the iPhone APP store or Google play store.
- 3** After the APP is successfully downloaded, you need to turn on the Bluetooth function. First of all, your mobile phone, and then open the APP, your APP will automatically pair with the ambient light, and you can control it.

*Android phones need to enable the location function and allow permissions



SCAN ME !

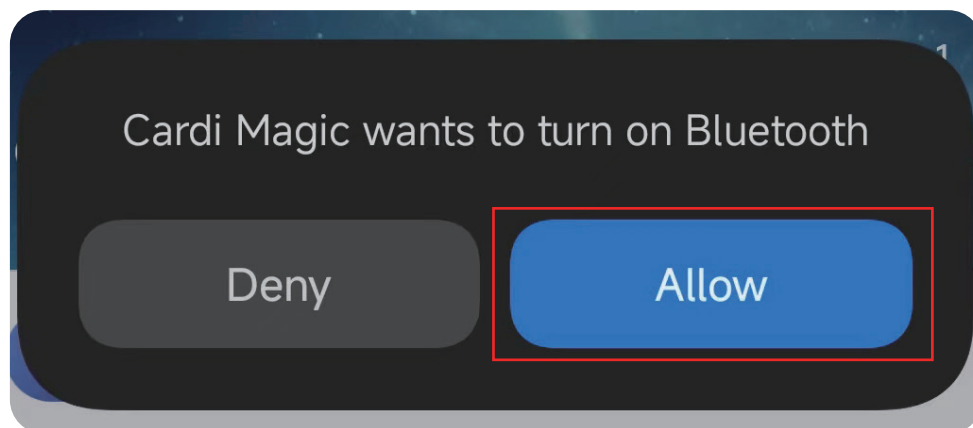
Get It On
Google Play

Download On The
Apple Store



BLUETOOTH CONNECTION INTRODUCTION

After the installation is complete, open the APP, click "Allow" to turn on Bluetooth, and then automatically connect to control the ambient light



CARDI SMART AMBIENT LIGHTING SYSTEM

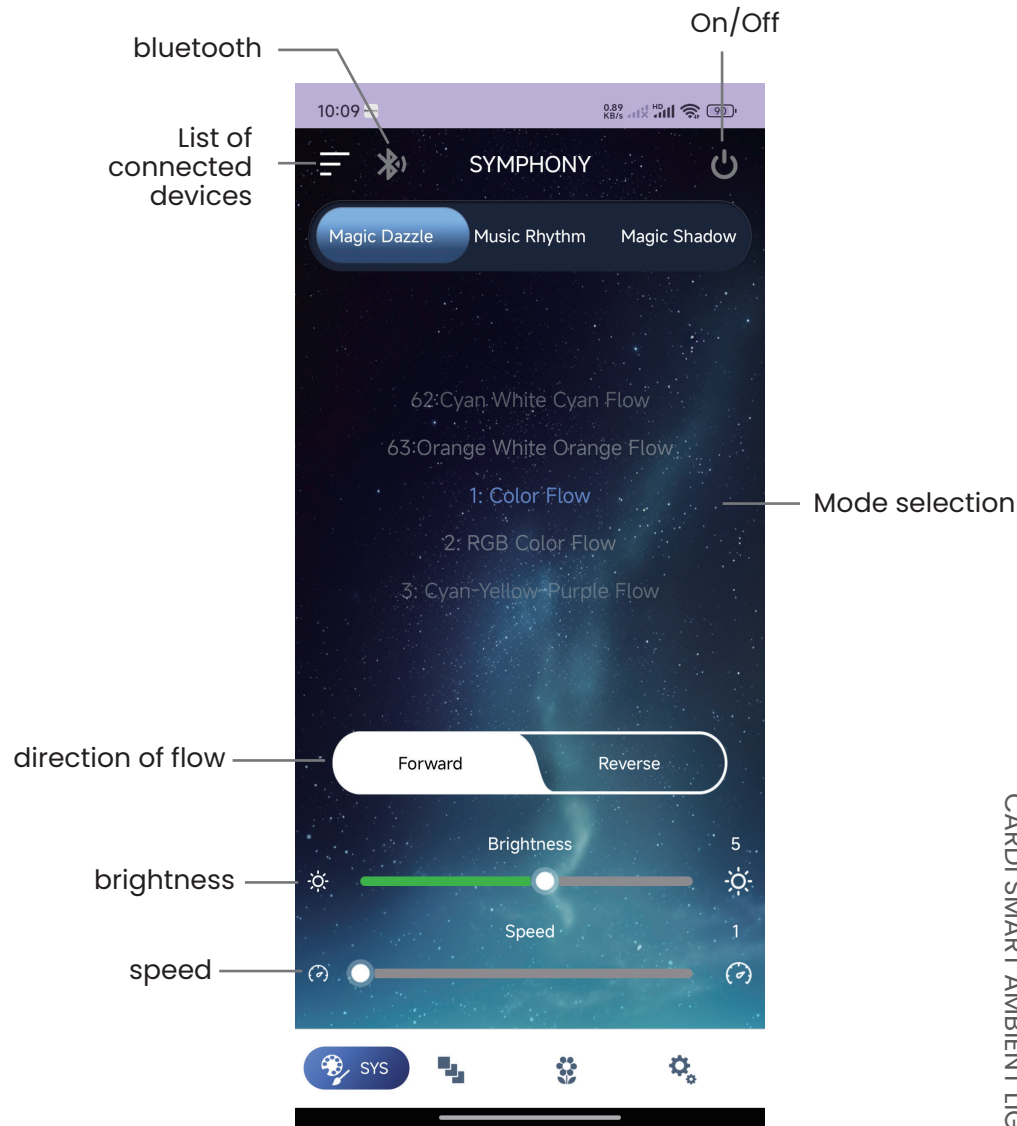


HOW TO USE THE APP

Bluetooth connection succeeded You can personalize the adjustment of color, mode, brightness, speed, music rhythm, zoning, etc.



1. Symphony interface: On the Symphony interface, you can select the illusion mode, adjust the brightness and speed, and select the direction of the streamer.



Symphony interface

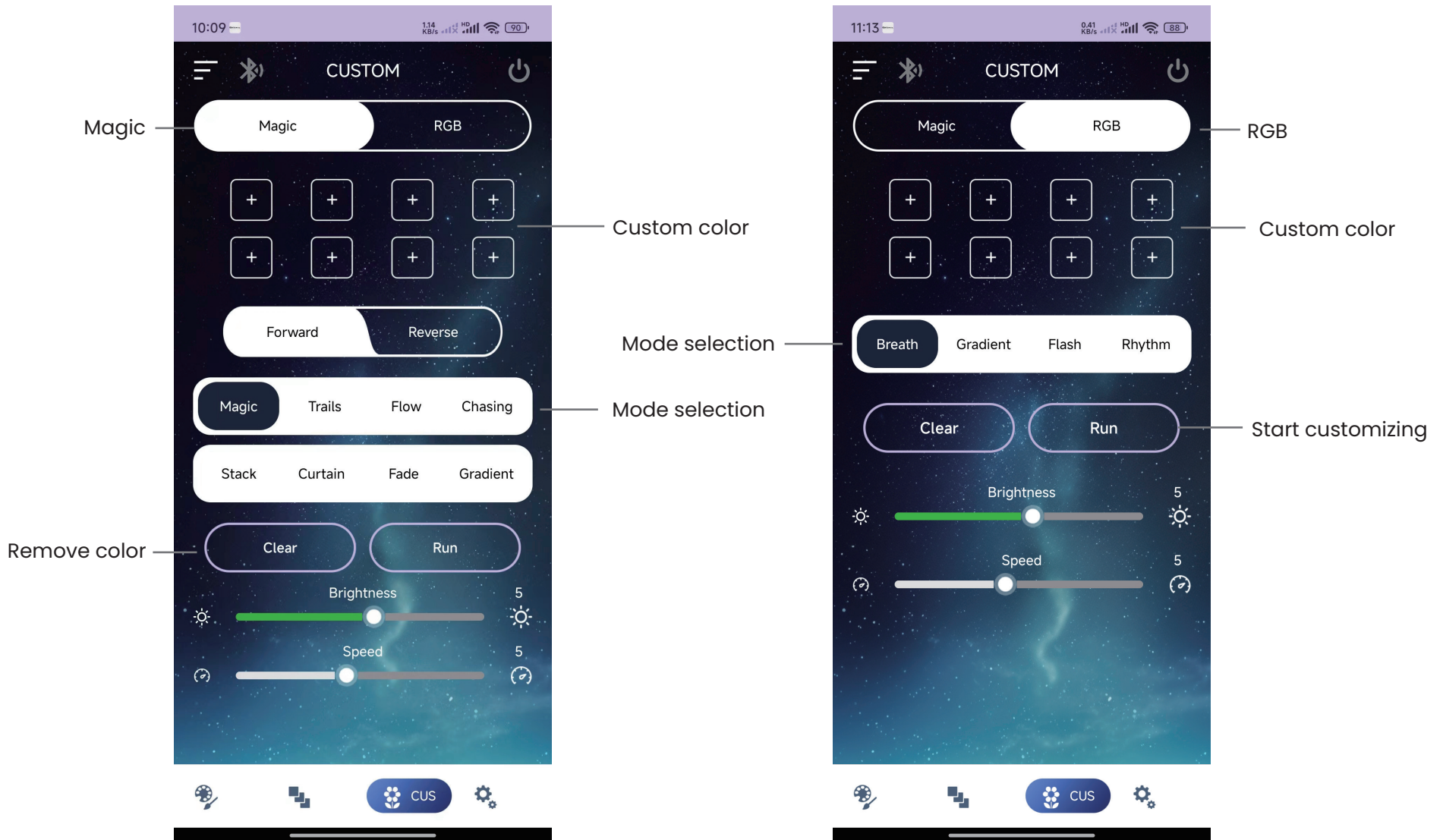
RGB interface :

2. RGB interface: You can select partitions, select RGB colors, select RGB modes, adjust speed and brightness, and select microphone modes;



RGB interface

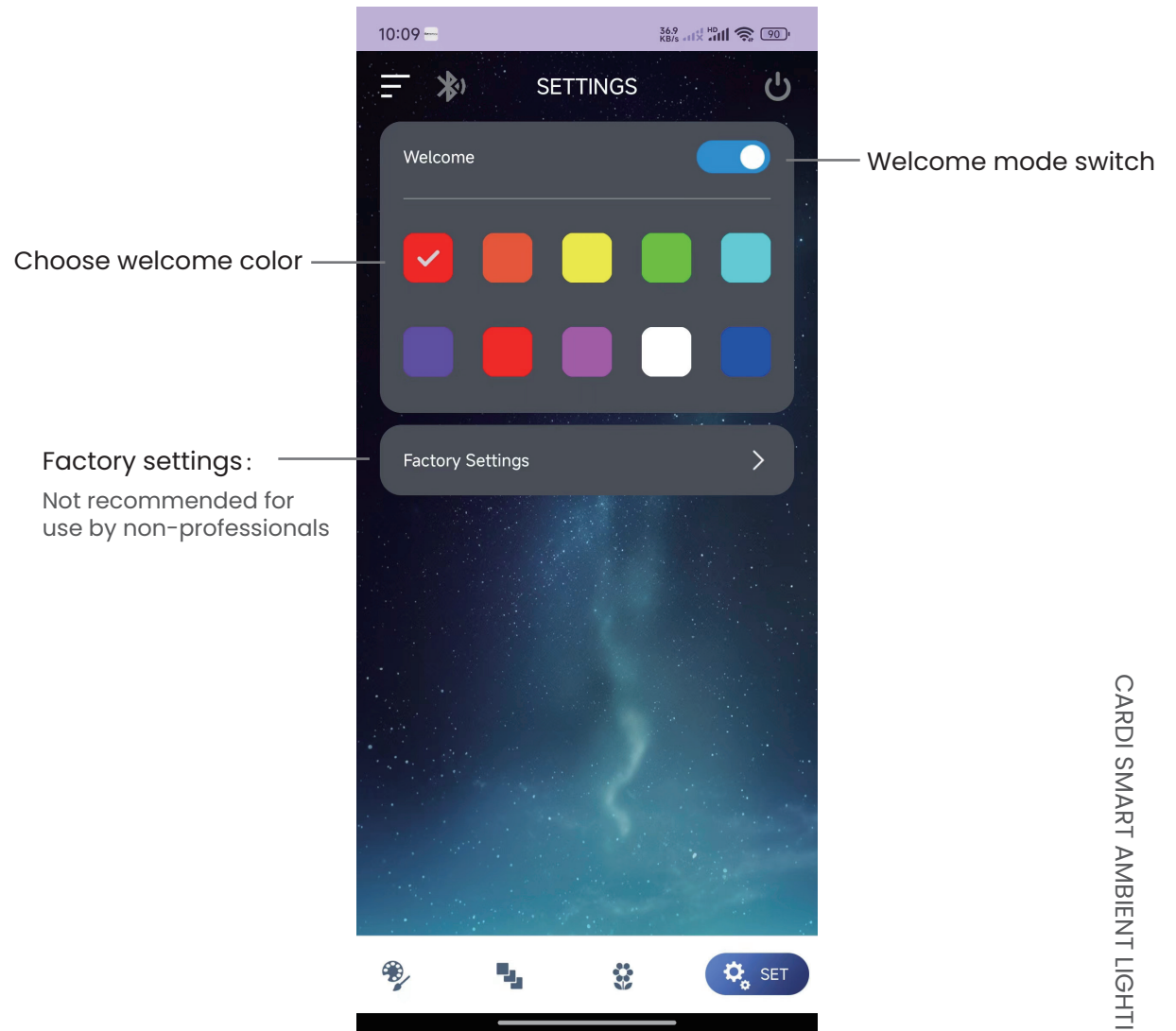
3. In custom interface, you can add color, choose mode, adjust speed.



Customization interface

Setting interface:

4. Setting interface: You can turn on or off the welcome mode, choose the welcome color, and restore to factory settings.



Setting interface



5.View the device list and connectable devices

Check Device List

